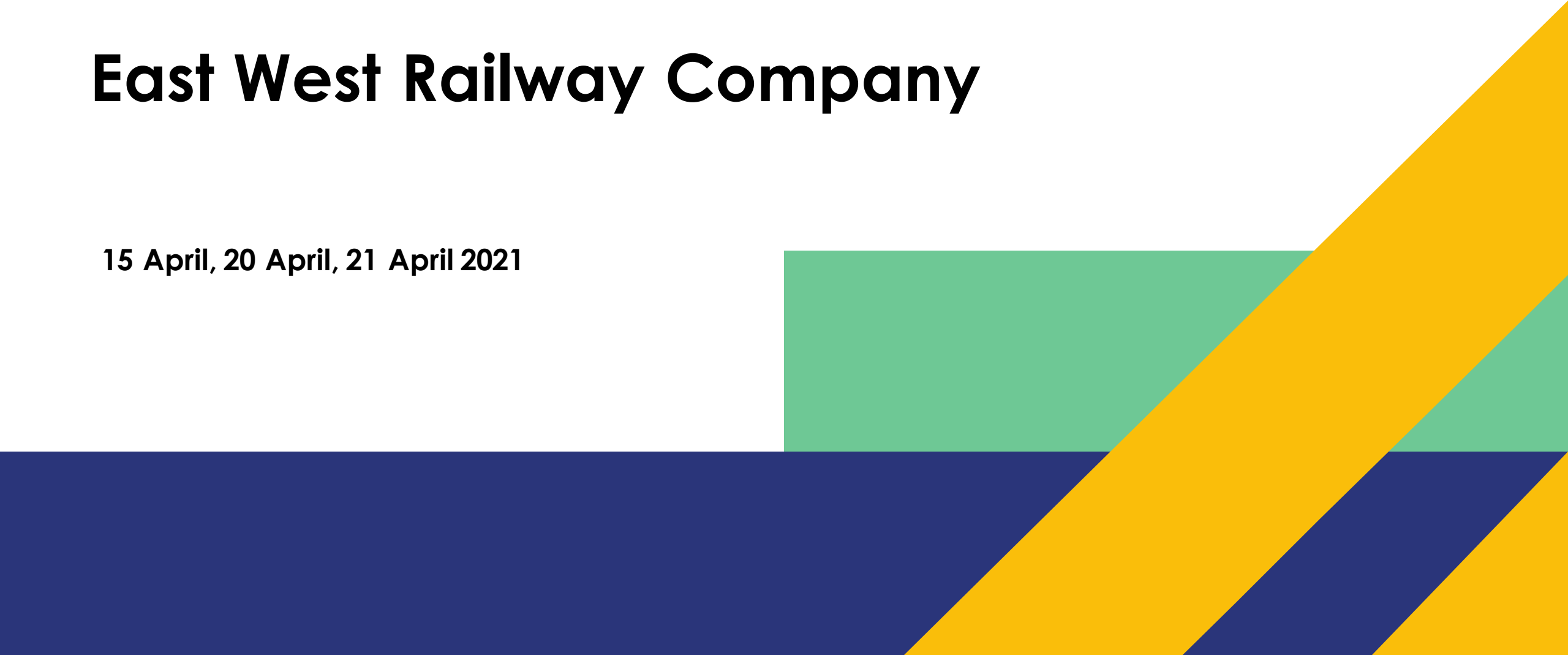


east
west
RAIL

eastwestrail.co.uk

East West Railway Company

15 April, 20 April, 21 April 2021



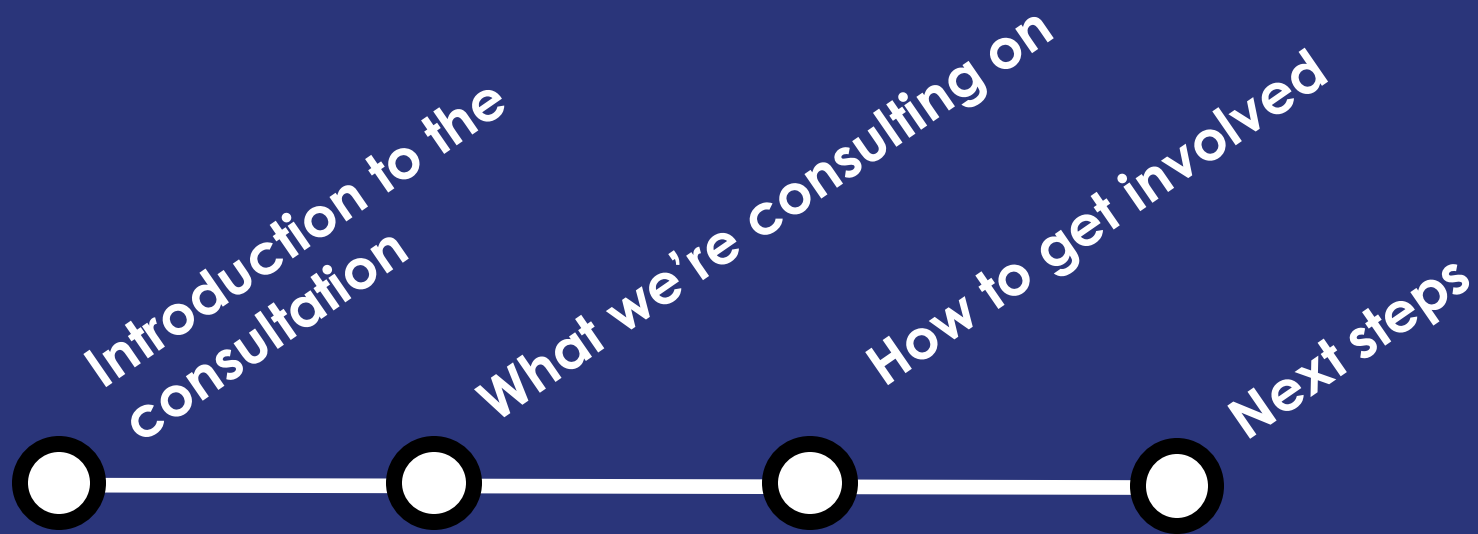
Non-statutory public consultation

31 March – 9 June 2021

east
west
RAIL



What we'll cover today

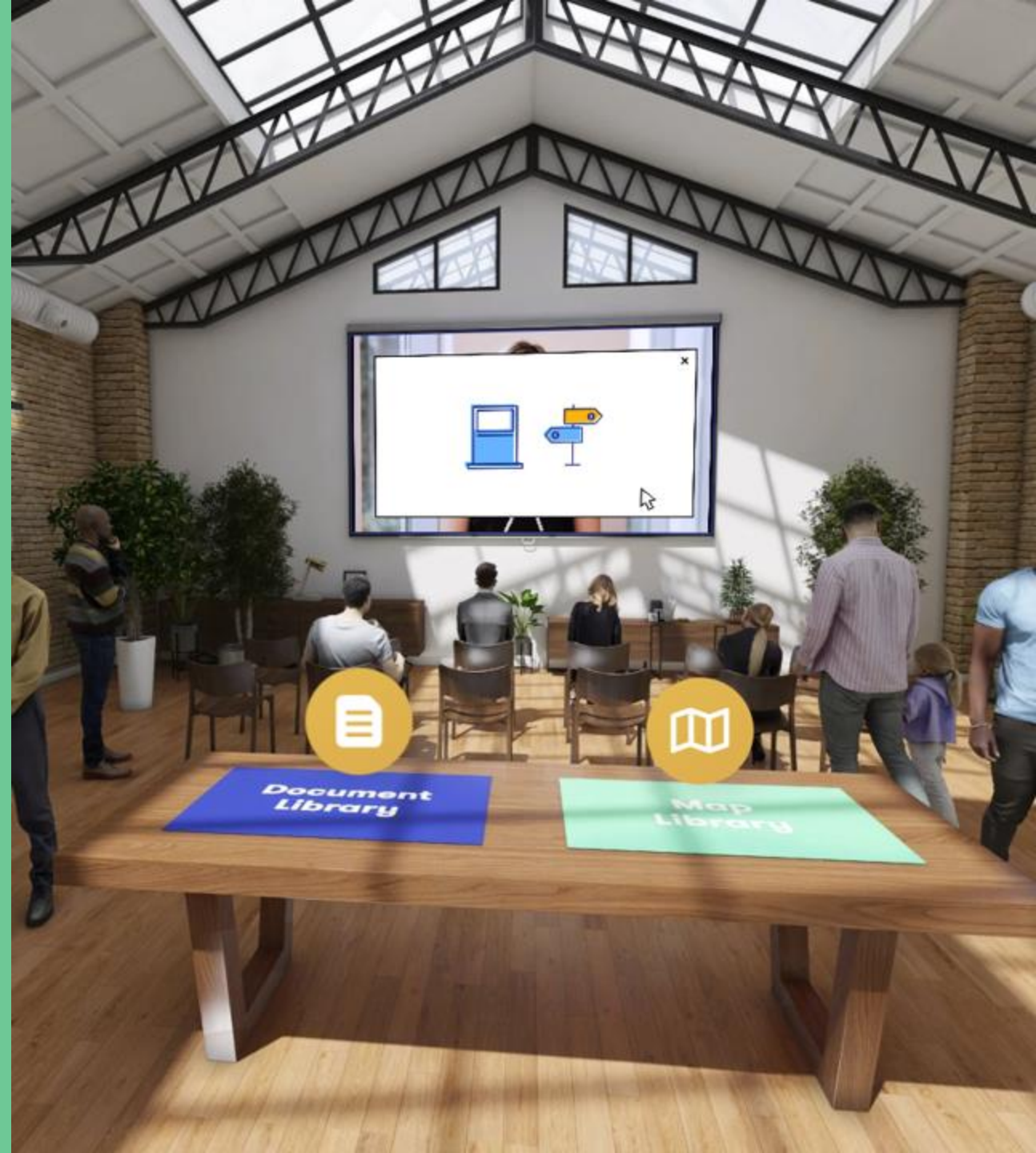


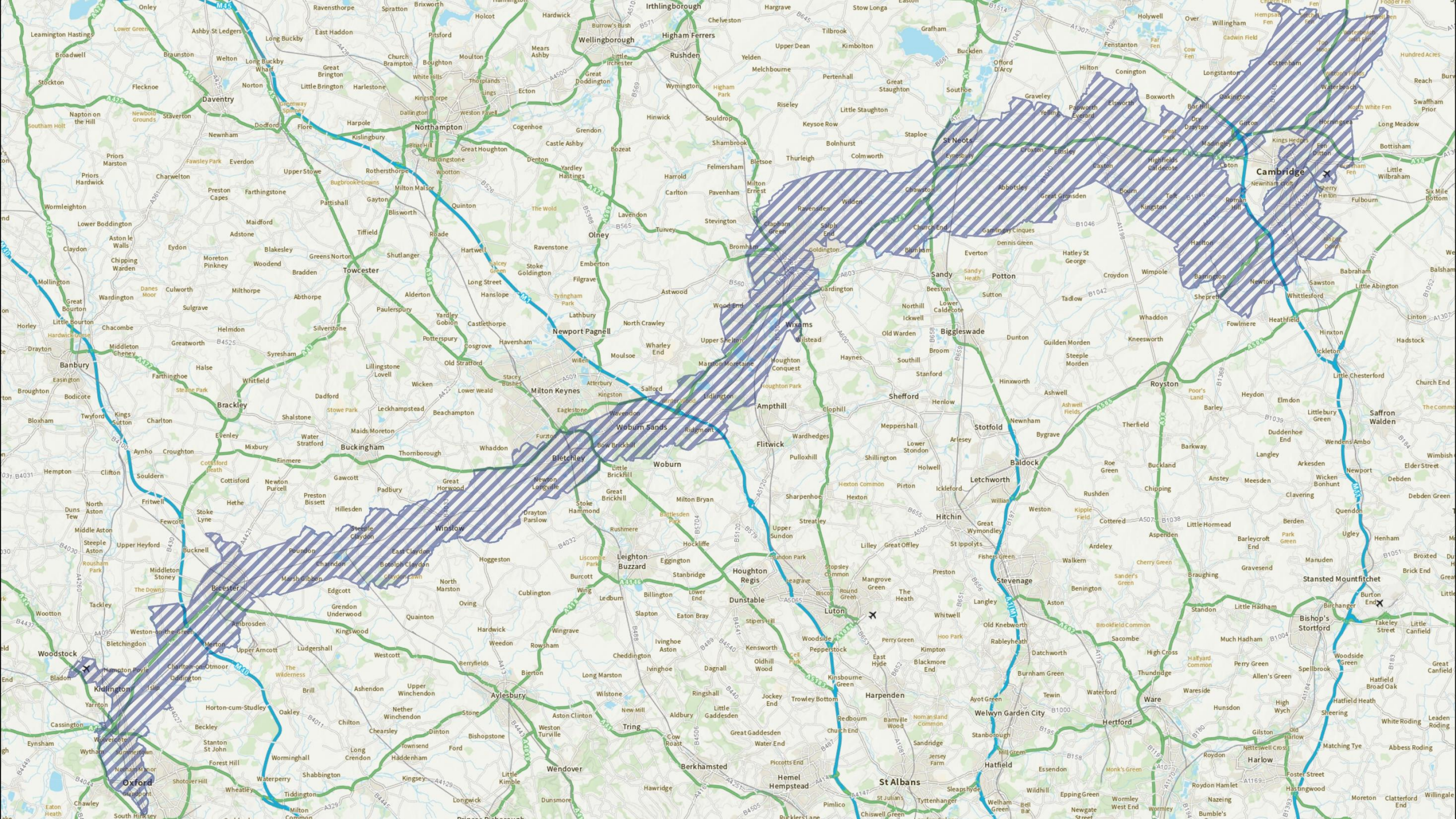
What we are consulting on

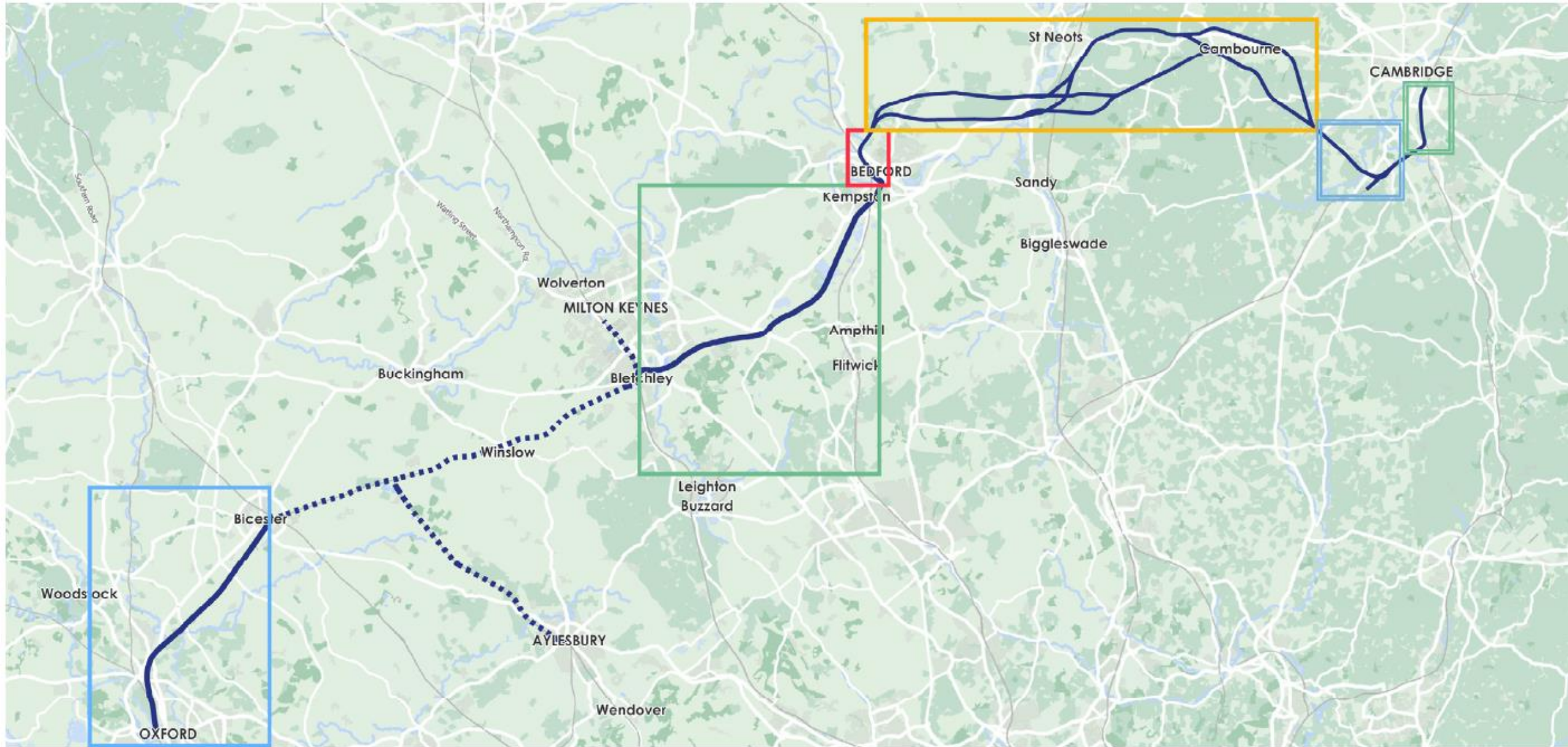
This 10-week consultation is an opportunity for you to share your thoughts on emerging proposals for East West Rail and your views on the broader scheme.

The consultation document covers the following key sections:

- Customer experience and railway operations
- Proposed infrastructure development
 - Oxford to Bicester
 - Bletchley and the Marston Vale Line
 - Bedford
 - Clapham Green to The Eversdens
 - Harlton to Hauxton
 - The Shelfords to Cambridge station







- Project section A:
Oxford to Bicester
- Project section B:
Bletchley to Marston Vale Line
- Project section C:
Bedford

- Project section D:
Clapham Green to The Eversdens
- Project section E:
Hariton to Hauxton
- Project section F:
The Shelfords to Cambridge



Shaping customer experience and railway operations

**This part of our consultation focuses
on what future customers want
from their railway experience.**

**We want to hear your views – from
individuals and organisations – on
the customer experience you would
like from East West Rail.**

What we're consulting on

Customer experience and railway operations

As part of developing the customer experience, we are keeping our minds completely open about what we might be able to offer.

We are looking for feedback on what our customers think would make positive differences to their customer travel experience.



The train service



Station experience



On train experience



Interaction with colleagues



Customer information

Section D

Clapham Green to The Eversdens



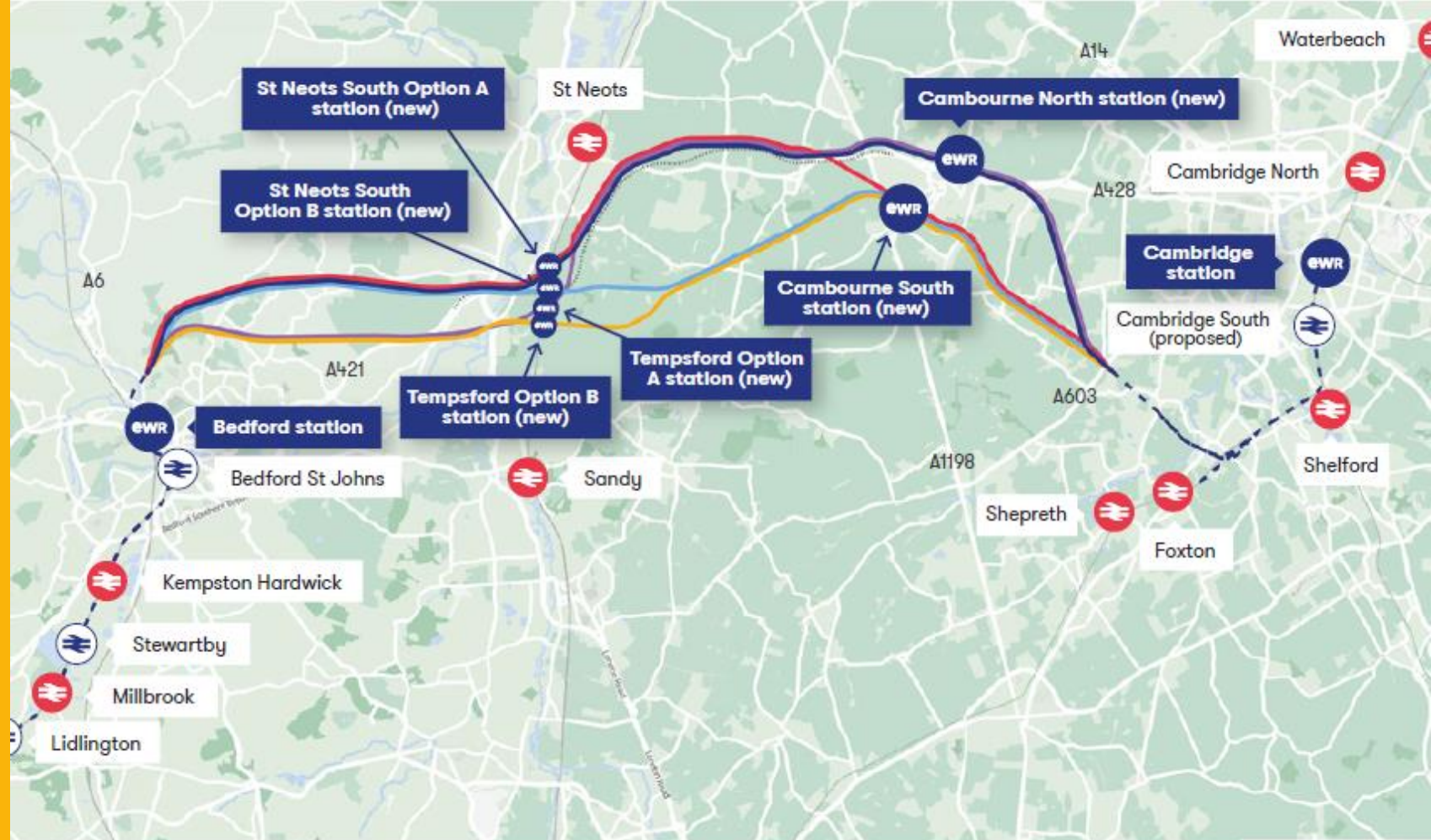
Clapham Green to The Eversdens

- This section of new railway from Bedford to Cambridge includes the area between Clapham Green, north of Bedford, to The Eversdens, south east of Cambourne
- In early 2019 we consulted on five potential route options for this section of new railway.
- Following the announcement of the preferred route option (Option E), we have identified and assessed potential route alignment options, as well as considering possible station locations on each of these route alignments.

**More information can be found in
Section D of the consultation document**



We have shortlisted five options for the route alignment in this section

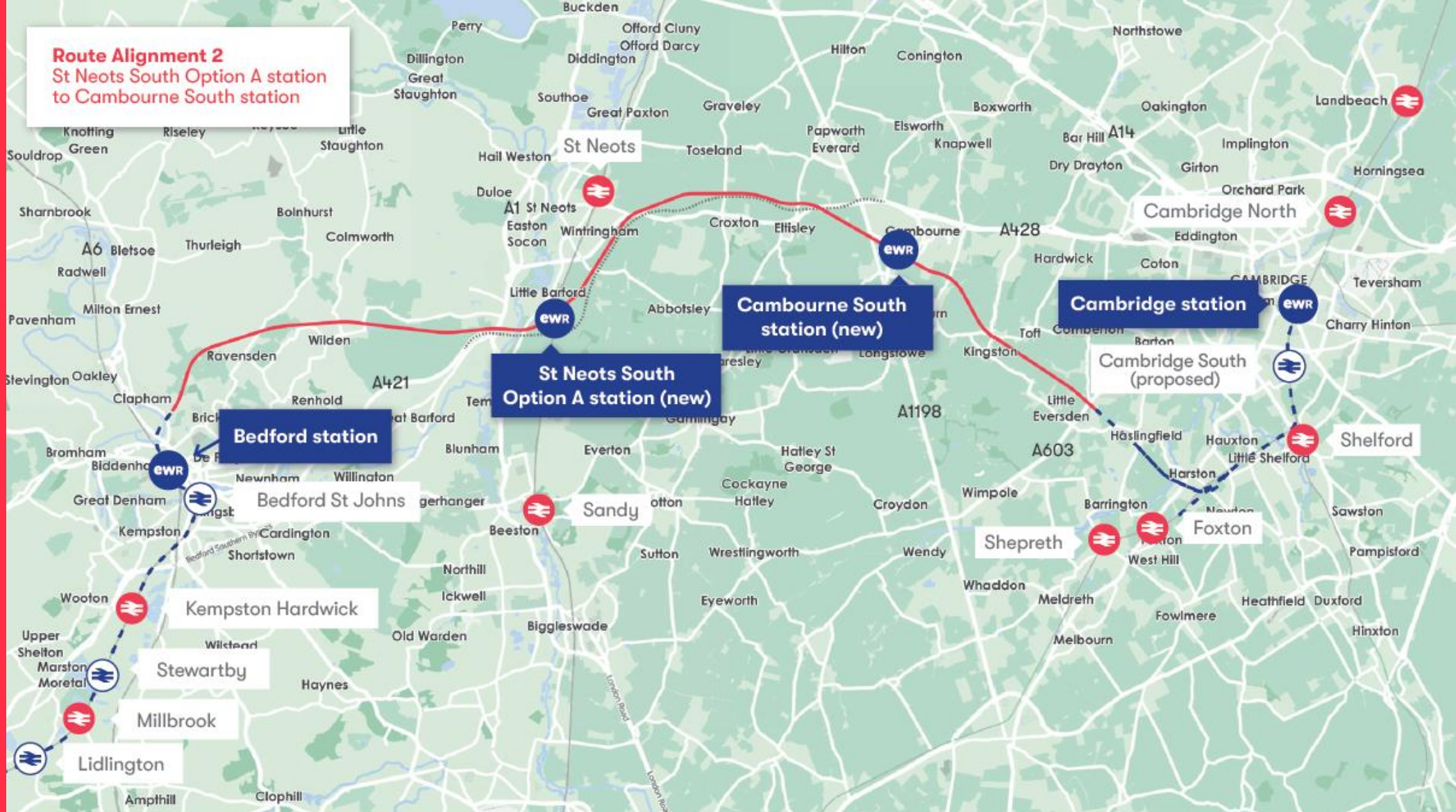


Legend

 Route Alignment 1 - Emerging preference St Neots South Option A station to Camboorne North station	 Route Alignment 6 St Neots South Option B station to Camboorne South station	 Route Alignment 9 - Emerging preference Tempsford Option A station to Camboorne North station
 Route Alignment 2 St Neots South Option A station to Camboorne South station	 Route Alignment 8 Tempsford Option B station to Camboorne South station	 Other area of East West Rail
 National Rail station	 Station used by East West Rail services	 Station that may be used by East West Rail services
		 Proposed A428 Alignment

Route alignment 2

The red alignment



Legend

Route
Alignment 2

Other station

Proposed
A428 Alignment

Station used by
East West Rail services



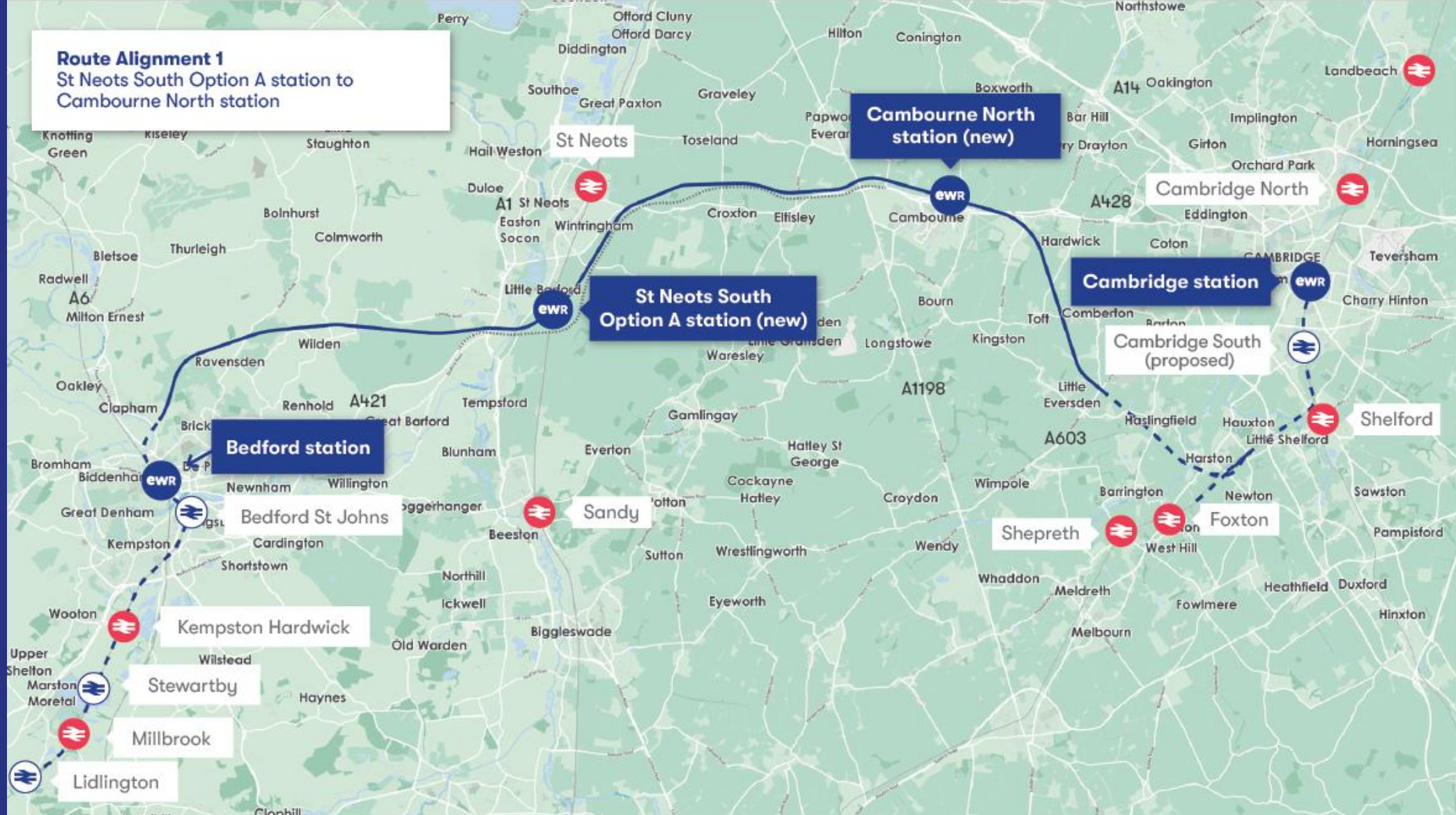
Station that may be used
by East West Rail services



Other area
of East West Rail

Route alignment 1

The dark blue alignment



Legend



Route
Alignment 1



Other
station



Proposed
A428 Alignment



Station used by
East West Rail services



Station that may be used
by East West Rail services



Other area
of East West Rail

Route alignment 8

The yellow alignment



Legend



Route Alignment 8



Other station



Proposed A428 Alignment



Station used by East West Rail services



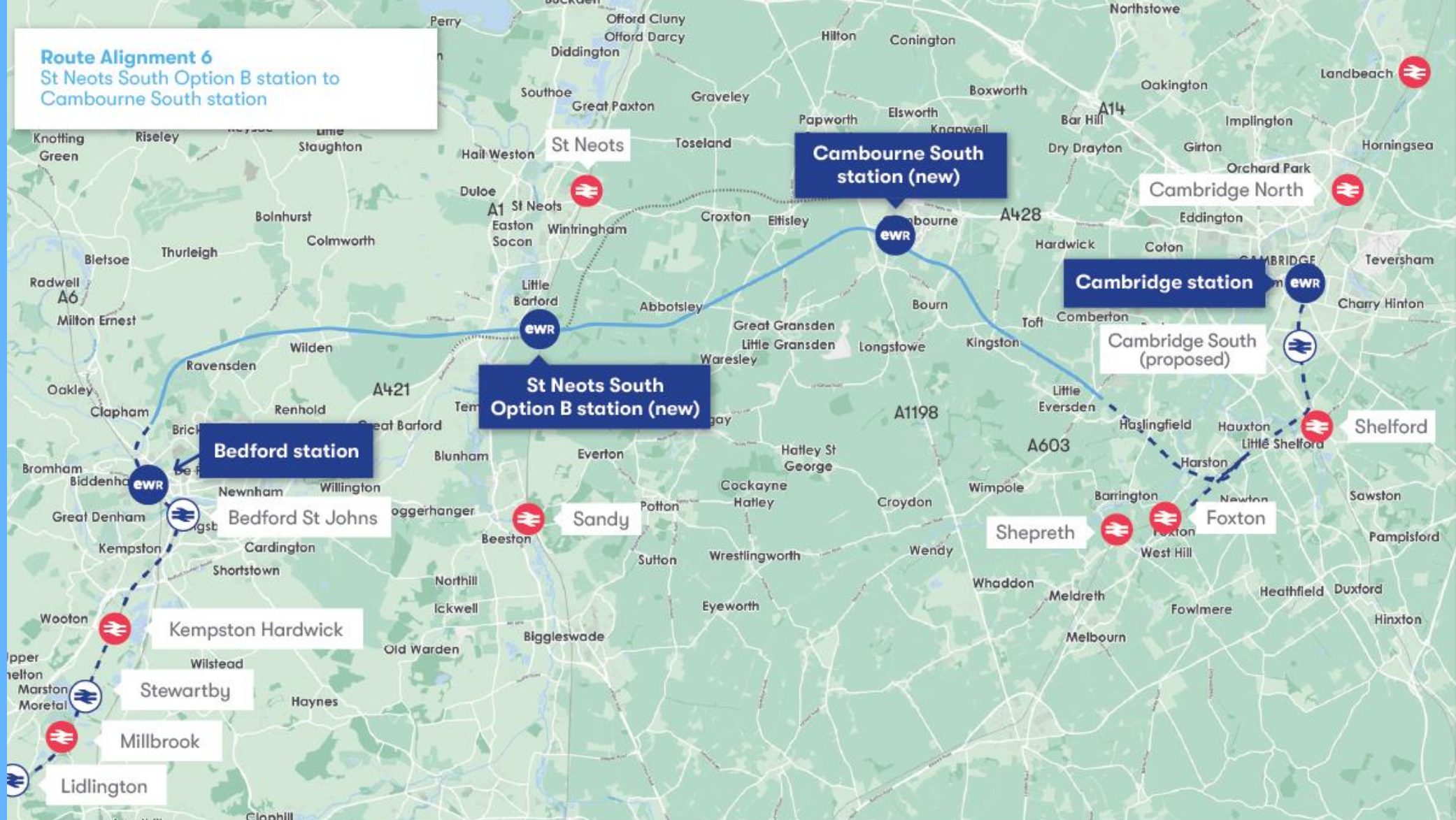
Station that may be used by East West Rail services



Other area of East West Rail

Route alignment 6

The light blue alignment



Legend



Route Alignment 6



Other station



Proposed A428 Alignment



Station used by East West Rail services



Station that may be used by East West Rail services



Other area of East West Rail

Route alignment 9

The purple alignment



Legend



Route Alignment 9



Other station



Proposed A428 Alignment



Station used by East West Rail services



Station that may be used by East West Rail services



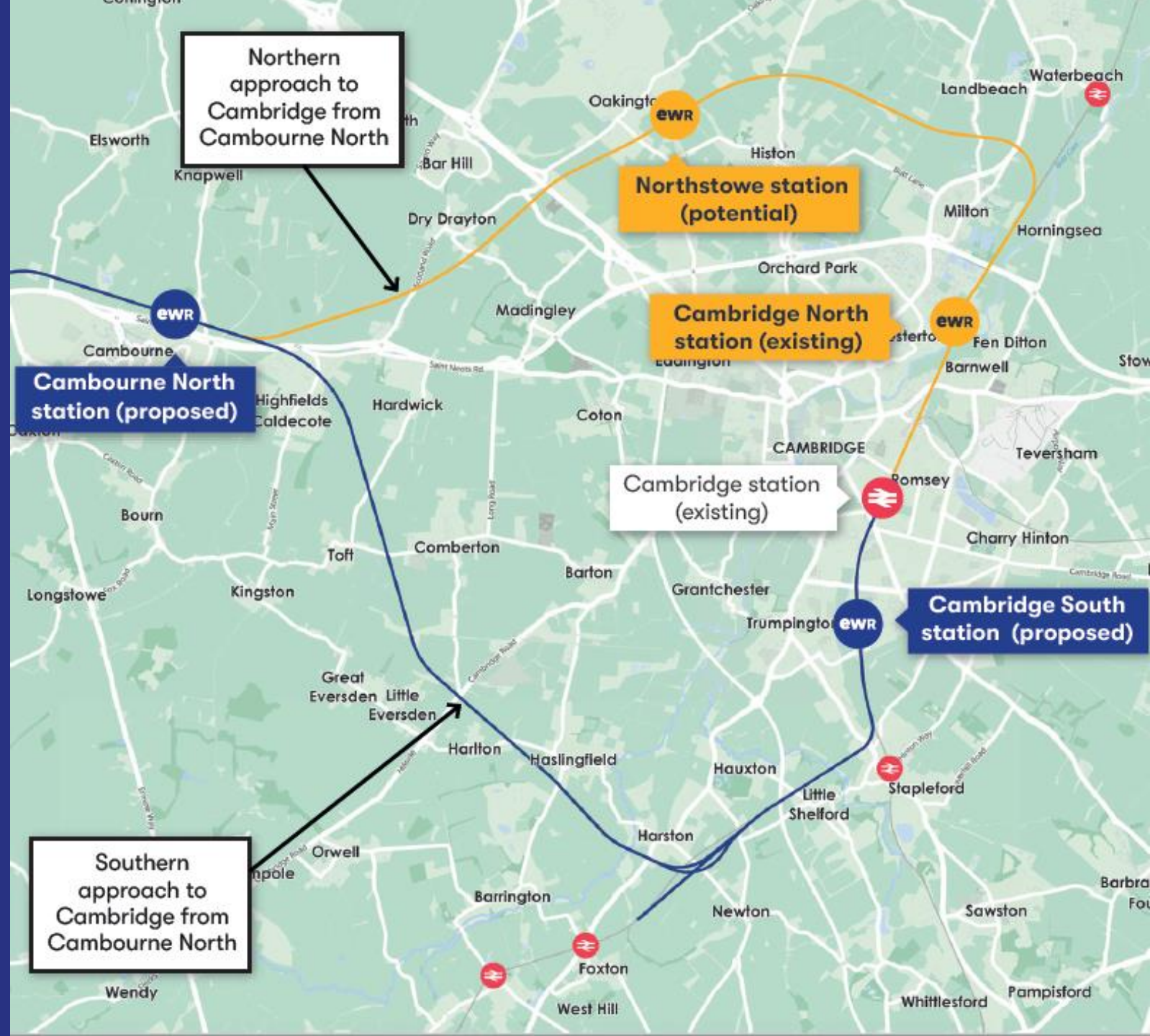
Other area of East West Rail

Approaching Cambridge



Approaching Cambridge

- Longer distance and journey times
- Duplicating existing public transport
- More infrastructure on flood plains, requiring additional embankments and viaducts that would likely need substantial foundations and increased earthwork stabilisations
- 39-84 property acquisitions and demolitions required, compared to 5 approaching from the south



Comparison of factual data

Cambourne station to Cambridge station	Southern approach	Northern approach
Operational alignment length	23.7km	24.6km
Built length in flood zone	830m	4735m
Total length of viaduct	1.1km	3.4km
Number of built-up areas intersecting 500m buffer of alignment	9	4
Length of railway in Cambridge wards	2.8km	4km
Number of properties within 200m of alignment	3,800	4,600
A road crossings (new infrastructure required)	4	5
B road crossings (new infrastructure required)	2	1
Minor road crossings	11	9
Guided busway crossings (new infrastructure required)	0	1
Properties	5	39-84

Information for landowners

To construct and operate the new East West Rail line, some of the proposals put forward for consultation will affect people's homes, businesses and farms.

- In developing our proposals, we aim to minimise the negative impact these may have on people's land and property and mitigate any impacts we cannot avoid
- While we don't yet know for certain which land or property will be needed, we know that publishing our plans could potentially affect people needing to sell their home, agricultural holding or small business.
- We are consulting on a discretionary purchase scheme, the Need to Sell Scheme, that, if introduced, would support owner occupiers once the announcement of the preferred route alignment for the railway has been made.
- We have a dedicated team in place who are focused on how the proposals will affect people's homes, businesses and farms. More information on how to contact them is available on our website at eastwestrail.co.uk.



Consultation document
and technical report



Consultation summary
document (sent to every
household in the
consultation zone)



Community hub and
resource centre



Virtual consultation
rooms and community
events

Public consultation

Working with you

Two meeting sessions during consultation:

- **Today** – A session to run you through all the elements we will be consulting on that are relevant to you
- **May** – A more discursive session – once you've had a chance to read through the documents designed to raise any questions you might have

How you can get involved

There are lots of different ways to get involved in the consultation, including:



Virtual consultation rooms – open from 12 April 2021 until 9 June 2021 which provide more information on each section of the consultation, including a full list of documents and maps available via the central table



Online public events – we are holding twelve online events for communities right the way from Oxford to Cambridge. There will be two lots of six events covering geographical areas along the route



Live chat events open to the public – a series of ten, two-hour live chat sessions held via the virtual consultation rooms, where participants will be able to discuss key topics directly with members of the project team



Dedicated phone line – the EWR Co telephone line will be available throughout the consultation period to enable those not wanting or able to engage online or in writing to speak to members of the Project team. The telephone number is **0330 134 0067**

Questions & Answers



How to respond to this consultation

We're keen to understand what you think about the emerging proposals for the Project, and your views on the broader scheme.

Feedback forms can be submitted online by emailing us at **consultation@eastwestrail.co.uk** or sent by post to **Freepost EAST WEST RAIL**

For further information, or to request a paper copy of the form to be sent to you, speak to the team by emailing us at **contact@eastwestrail.co.uk** or by calling us on **0330 134 0067**



What next?

east
west
RAIL

Stay in touch

For further information, speak to the team by emailing us at contact@eastwestrail.co.uk

or by calling us on 0330 134 0067.



east
west
RAIL

eastwestrail.co.uk